

The HD Range of Deluge Skids

HD Fire Protect is a leading manufacturer of world-class water and foam based firefighting equipment. HD product range comprises of an extensive range of deluge valve models with various construction materials, trim types and features.

Deluge valves, which are also known as system control valves in a deluge system, are used for the fast application of water in spray systems. Deluge systems protect areas such as power transformer installation, storage tanks, conveyor protection and various other industrial applications. With the addition of a foaming agent, deluge valves can also be used to protect areas such as aircraft hangars and inflammable liquid stores.

In order to make deluge valve systems more user-friendly, it is necessary to consider operational ease as well as faster and convenient installation. With this in mind, HD Fire Protect has designed and manufactured a range of deluge skids. These deluge skids are standard modular packages. The skids are either standard UL Listed models or custom engineered to meet specific requirements. Primarily the skids can be categorised as skid cabinets or open-type frame mounted.



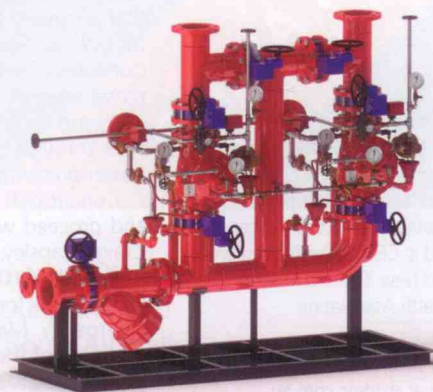
In the case of skid cabinets, the whole skid assembly is contained inside a stainless steel, powder coated cabinet. The cabinets have been designed to have an aesthetically pleasing appearance. All of the gauges are visible externally through a transparent polycarbonate window, while all of the side panels are easily removable for ease of maintenance. The cabinets can also house a temperature control feature for when skids are likely to be used in extreme or freezing temperatures. Open skids are mounted on a steel frame.

The deluge valve mounting could be vertical or



horizontal. The open skids can also be supplied as multi-line deluge valve skids, where between three and six deluge valves can be mounted vertically on a single skid. There are also a number of special skid designs, for example, where factors such as space constraints need to be taken into account, when compact vertical skids are available. Flanged or grooved connections are provided, and recently HD Fire Protect also launched a skid that is suitable for sea water applications. In that case the complete skid is built using corrosion resistant materials.

The HD skids are completely pre-assembled and factory tested, and generally come with downstream, upstream and bypass valves, which can be gear operated using butterfly valves or gate valves. Instrumentation, such as pressure switches, solenoid valves, pressure transmitters, limit switches and basic control panels are mounted, pre-wired and terminated into a junction box. **APF**



For more information, go to
www.hdfire.com